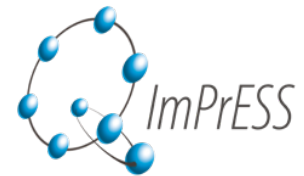


Installation of the Q-ImPRESS IDE



Prerequisites

The Q-ImPRESS IDE requires Java 1.6 for full feature support. Please visit <http://java.sun.com/> and download the latest Java SE Development Kit (JDK) for your platform. In case you already have a previous Java Installation, make sure that Java 1.6 is set up as the default Java runtime environment for your system (e.g. open a command line and type “java -version”).

Eclipse Installation

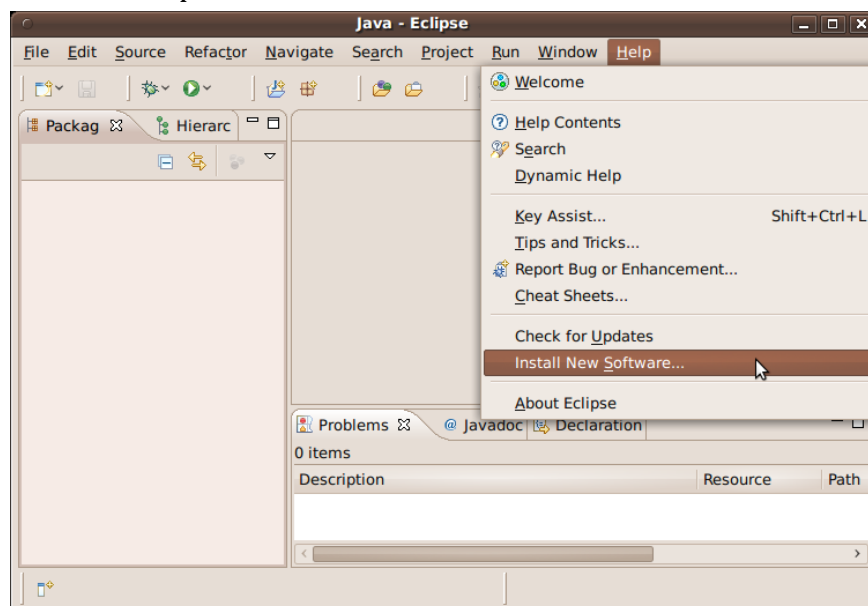
The Q-ImPRESS IDE is based on the Eclipse Galileo development environment. In order to install the Q-ImPRESS IDE, please download the “Eclipse Modeling Tools” distribution from the Eclipse download website: <http://www.eclipse.org/downloads/>

To install the “Eclipse Modeling Tools” distribution, simply unzip the downloaded ZIP file. Note: There may be issues when using the built-in ZIP functionality of Windows OS. We recommend the use of alternative ZIP decompression tools, such as 7-zip (<http://www.7-zip.org/>).

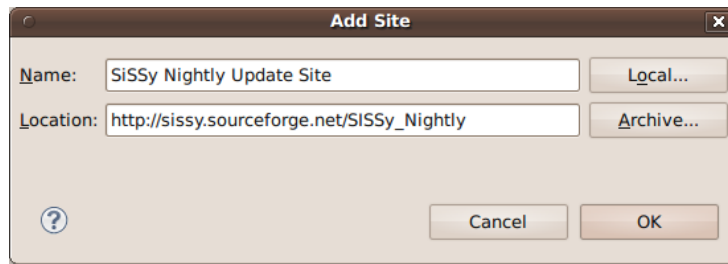
Q-ImPRESS IDE Installation

Once you have installed Java 1.6 and the Eclipse Galileo Modeling Tools distribution, please execute the following steps to get started with the Q-ImPRESS IDE:

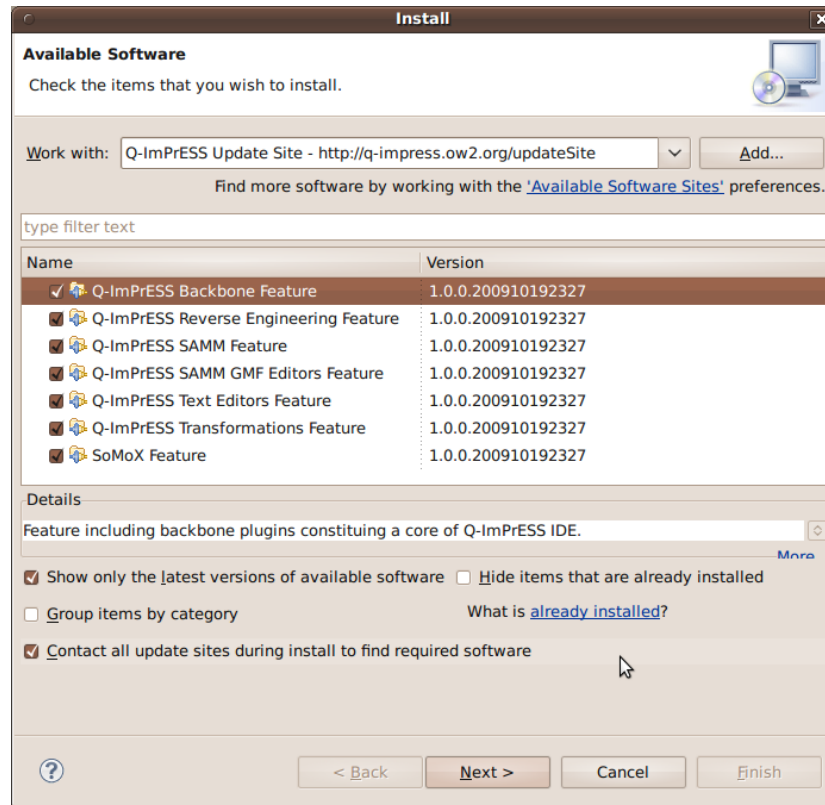
- Start Eclipse. Select “Help” → “Install New Software...” from the menu.



- Add the following three update sites by clicking on “Add...”
 - Name: “SISSy Nightly Update Site”
Location: “http://sissy.sourceforge.net/SISSy_Nightly”
 - Name: “PCM Nightly Update Site”
Location: “http://sdqweb.ipd.uka.de/eclipse/PCM_nightly”
 - Name: “Q-ImPRESS Update Site”
Location: “<http://q-impress.ow2.org/updateSite>”



- You are now able to select these update sites using the “Work with” dropdown list. Due to an issue with the current update site mechanism, it is necessary to uncheck “Group items by category”, so that all necessary features are listed.



- Repeat the following steps using the update sites in the order listed above (i.e. “SiSSy Nightly Update Site”, then “PCM Nightly Update Site” and “Q-ImPRESS Update Site” last).
 - Select all features listed in the install window. Then click “Next”.
 - The following window shows all features that are to be installed. Confirm the selection with “Finish”.
 - During the installation process, a security warning might pop up, notifying you that some of the software contains unsigned content. Continue the installation process by press “OK”.
 - After the installation is finished, a window will pop up asking you to restart the Eclipse workbench. Select “Apply Changes” for the first two update sites. After the installation process for the last update site, select “Yes” to restart Eclipse. The Q-ImPRESS IDE is now installed.